

Z-SERIES HIGH-PERFORMANCE EXTINGUISHERS




Quality is Behind the Diamond



www.firesys.com.au | 1300 88 3473 | info@firesys.com.au



The **AMEREX Z-Series** line of high performance extinguishers bring even more performance, reliability, and value to corrosive conditions.

 The top choice of oil and gas professionals for more than two decades, High-Performance extinguishers from Amerex combine legendary knockdown power with an outstanding life span and an overall lower cost than anything else currently available. Thanks to our zinc-enriched proprietary coating, Amerex High-Performance models also boast an **industry-leading 12-year warranty against corrosion.**



Fast Flow

Longer life, lower cost and the best warranty in the industry—
that's quality behind the diamond.



www.firesys.com.au | 1300 88 3473 | info@firesys.com.au

THE EXCLUSIVE Z-SERIES FROM AMEREX.

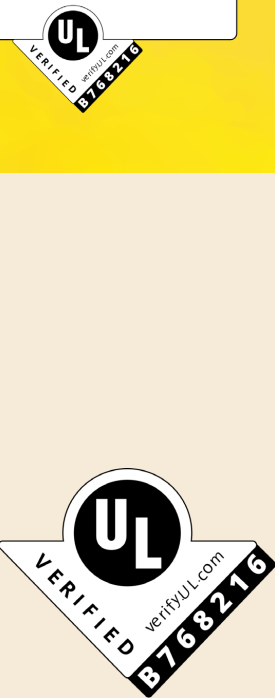
AMEREX Z-Series fire extinguishers are designed to protect life and property against fire hazards in corrosive environments.

The most extreme workplaces in the world are getting a new generation of extinguisher that stands strong against the rigors of the job. The Z-Series goes head to head with environments containing corrosive chemicals, gases, or salt air or water, providing unmatched resistance to damage, providing unmatched resistance to damage, distress and wear. The innovative

zinc-based primer created by the Amerex research and development team makes this product a rugged solution for longstanding durability problems in harsh environments around the world. Invested in substantial research and testing, including verification, to measure the Z-Series extinguishers could stand up to 12 years in a severely corrosive environment.

UL verification is an objective, science-based assessment that confirms the accuracy of marketing claims. The UL Verified Mark is located on each unit. The Z-Series product line is verified by UL to withstand 12 years of simulated severe corrosion.

**Resists 12 years
of simulated
severe corrosion
in a salt-
contaminated
environment.**



Compliance Flow



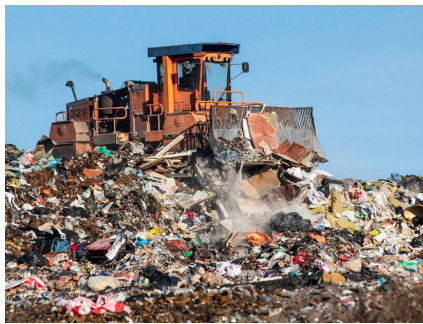
Z-SERIES FEATURES & BENEFITS

- 12-year warranty
- Highest achievable UL ratings
- Proprietary corrosion-resistant paint process
- Severe corrosion tested in accordance with ISO 2170
- Choice of ABC or Purple K dry chemicals
- Simple operation and maintenance
- Only UL certified corrosion-resistant extinguisher on the market
- Compliance Flow and Fast Flow discharge available
- Improved environmental impact compared to galvanized units



Z-SERIES APPLICATIONS

The AMEREX Z-Series is recommended for use on sites where heavy industrial, manufacturing, mining, processing facilities, anywhere chemical- or corrosive-intensive work takes place or an elevated fire risk exists.



Our customers put Amerex to the test every day in the world's most extreme work environments.

- Oil and gas platforms
- Oil refineries
- Mining operations
- Coastal and marine environments
- Agriculture
- Industrial climates
- Waste management processes



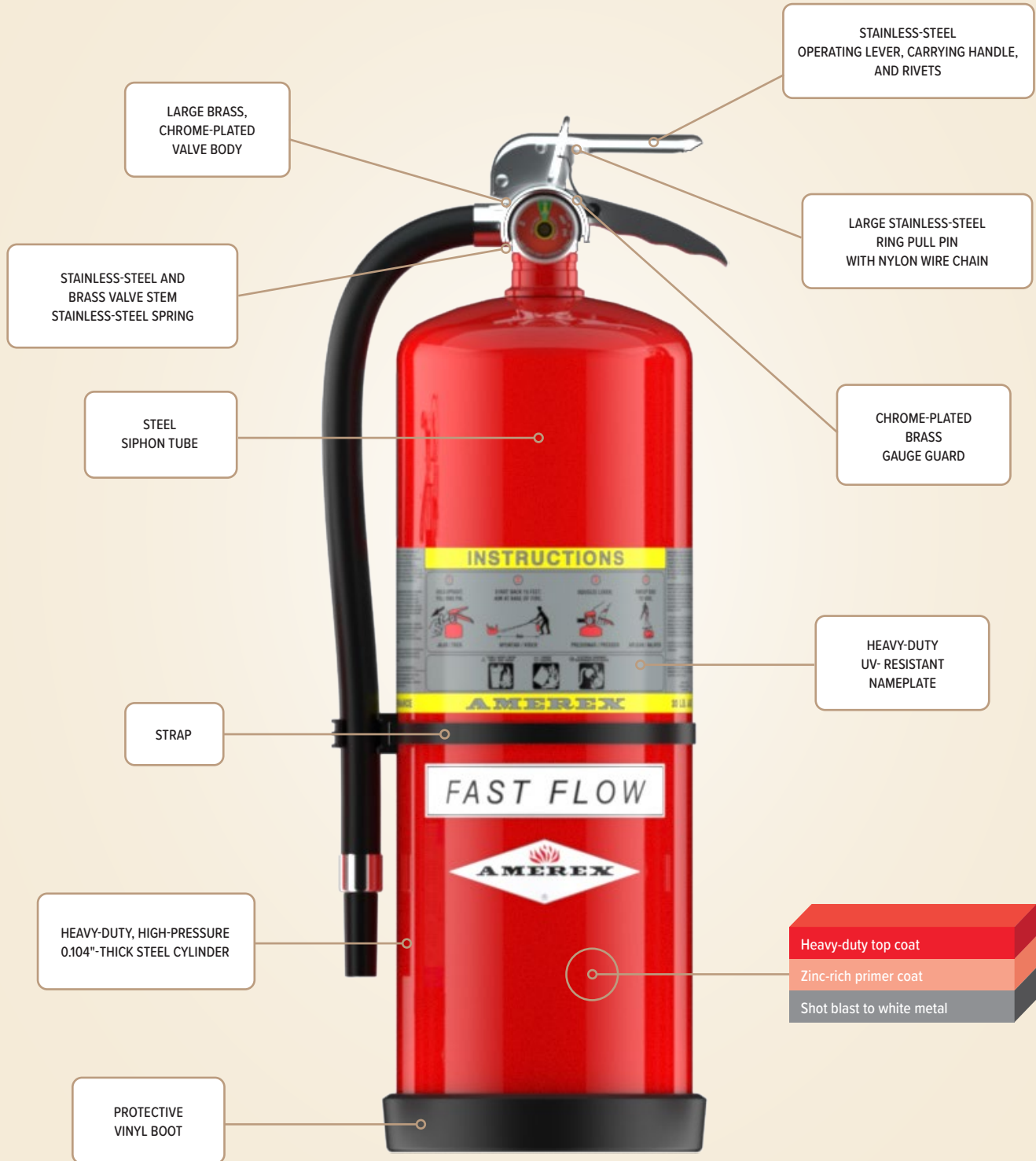
HIGH-PERFORMANCE EXTINGUISHERS

Z-Series High-Performance
stored-pressure extinguishers
combine Amerex's
state-of-the-art
corrosion resistance
with one of our
best-selling products.

Available in both **FAST FLOW** and **COMPLIANCE FLOW** models, the Z-series High-Performance extinguisher offers superior fire protection and reliability in the most challenging situations. With **exclusive** Amerex paint process, fewer moving parts, and simple design, these extinguishers provide the ultimate in corrosion resistance plus minimal repair and maintenance costs over time



ANATOMY OF AN AMEREX Z-SERIES EXTINGUISHER



Each Z-Series product is backed by our **12-year manufacturer warranty**—the best available in the industry.



www.firesys.com.au | 1300 88 3473 | info@firesys.com.au

Z-SERIES COMPLIANCE FLOW

The Amerex Compliance Flow extinguisher has a higher UL rating, extended discharge times, and lower flow rate allowing it to meet or exceed a diverse array of code requirements. Available with ABC or Purple K dry chemicals, compliance flow models discharge at a rate that meet UL discharge time requirements with the same initial range and pack dimensions. If meeting code requirements in a harsh industrial setting is a priority, Compliance Flow models are the best choice for you.



COMPLIANCE FLOW SPECIFICATIONS						
	ABC Dry Chemical			Purple K Dry Chemical		
MODEL NUMBER	713	714	715	716	717	718
UL & ULC RATING	4A:80B:C	10A:120B:C	10A:160B:C	80B:C	120B:C	160B:C
CAPACITY (LBS / KG)	13.2 / 6	20 / 9	30 / 13.6	13.2 / 6	20 / 9	30 / 13.6
SHIPPING WEIGHT (LBS / KG)	31	43	58	31	43	58
HEIGHT (IN / CM)	175	24.75	26.5	175	24.75	26.5
WIDTH (IN / CM)	105	105	11	105	105	11
DEPTH (IN / CM)	7	7	8	7	7	8
RANGE (INITIAL — FT)	40-50			40-50		
DISCHARGE TIME (SECONDS)	22	30	34	22	29	34
AVG DISCHARGE RATE (LBS / SEC)	.59	.65	.95	.61	.67	.81
INCLUDED BRACKET	Wall			Wall		



Z-SERIES FAST FLOW

Fast Flow models discharge at high flow rates, delivering more pound of chemicals per second to supply the safest and fastest three-dimensional “knock down” capability. Ideal for high-risk areas, Fast Flow models discharge faster than their compliance counterparts and offer impressive results in the face of fast-moving fires.



FAST FLOW SPECIFICATIONS							
	ABC Dry Chemical			Purple K Dry Chemical			
MODEL NUMBER	790	791	792	793	794	795	796
UL & ULC RATING	2A:40B:C	4A:40B:C	4A:40B:C	40B:C	40B:C	20B:C	40B:C
CAPACITY (LBS / KG)	13.2 / 6	20 / 9	30 / 13.6	13.2 / 6	20 / 9	20 / 9	30 / 13.6
SHIPPING WEIGHT (LBS / KG)	31	43	58	31	43	43	58
HEIGHT (IN / CM)	175	24.75	26.5	175	24.75	24.75	26.5
WIDTH (IN / CM)	105	105	11	105	105	105	11
DEPTH (IN / CM)	7	7	8	7	7	7	8
RANGE (INITIAL — FT)	40–50			40–50			
DISCHARGE TIME (SECONDS)	15	18	21	15	15	10	16
AVG DISCHARGE RATE (LBS / SEC)	.94	1.20	1.60	.94	1.44	2.00	1.88
INCLUDED BRACKET	Wall			Wall			



HIGH-PERFORMANCE Z-SERIES WHEELED EXTINGUISHERS

Just like our hand-held units, **Z-Series High-Performance wheeled extinguishers** offer superior reliability, corrosion resistance, and affordable maintenance costs.

Amerex wheeled extinguishers have exceptional range and flow rate making them ideal for use with combined agent attack to extinguish escape points of flammable liquids under pressure. Our wheeled units meet test standards AN/UL S504 and S508, plus ANSI/UL 299 and 711. Each unit has the option of being equipped with 36" x 6" wheels with non-sparking rubber treads.

WHEELED FEATURES & BENEFITS

- Proprietary corrosion-resistant paint process
- Integral lift loops for loading/positioning on board.
- Carriage design rests the agent cylinder and hose above ground for protection.
- Chrome-plated brass shut-off ball valve with swivel pistol grip outperforms aluminum.
- Separate 3' fill port with chrome plated brass cap
- 1" x 50' field-repairable hose constructed with MIL-SPEC brass couplings.
- Full fill regardless of the type of chemical used—no “nominal” fill sizes
- Large, easy-to-read pressure gauge with stainless-steel gauge guard.
- Wide-footprint wheels at 36" x 6" for easy movement of unit.

BENEFITS OF STORED-PRESSURE EXTINGUISHERS

Extremely low maintenance costs make stored-pressure extinguishers an ideal choice for extended use in harsh surroundings. Stored-pressure extinguishers mean no separate nitrogen cylinder or regulator to test, no chemical contamination, no moisture seals or high-pressure hoses to replace or inspect, and fewer parts requiring replacement over time. With low maintenance costs, affordable price points, high reliability and general ease of use, stored-pressure extinguishers are an ideal choice for extended use in harsh surroundings.

Each Z-Series
Product is Backed by Our

12-YEAR MANUFACTURER WARRANTY

—the Best Available in
the Industry.



125 lb

250 lb

WHEELED EXTINGUISHER SPECIFICATIONS

	ABC Dry Chemical	Purple K Dry Chemical	
MODEL NUMBER	756	758	759
UL & ULC RATING	40A:160B:C	160B:C	120B:C
CAPACITY (LBS / KG)	250 / 113.4		125 / 56.7
SHIPPING WEIGHT (LBS / KG)	775 / 351.3		-
HEIGHT (IN / CM)	60 / 152.4		53.5 / 135.9
WIDTH (IN / CM)	37 / 93.98		34 / 86.4
DEPTH (IN / CM)	44 / 111.6		38.5 / 97.8
DISCHARGE TIME (SECONDS)	50	38	30
DISCHARGE RANGE (FT / M)	60-80 / 18.19-24.26		50-55 / 15.2-16.76
OPERATING TEMP. (F / C)	-40° to +120° / -40° to +49°		
HOSE LENGTH (FT / M)	50 / 15.2		
HOSE DIAMETER (IN / CM)	1 / 2.54		
WHEELS [STEEL] (IN / CM)	36 x 6 / 91.44 x 15.2		
USCG APPROVED	Yes		





Quality is Behind the Diamond

7595 Gadsden Hwy
PO Box 81
Tusssville AL 35773
Ph (205) 655-321



[amerex_corporation](#)



[@amerex_corporation](#)



[@amerex_corporation](#)



[amerex_corporation](#)

[www.amerex-fir.com](#)
[sales@amerex-fir.com](#)
[intl.sales@amerex-fir.com](#)



[www.firesys.com.au](#) | 1300 88 3473 | [info@firesys.com.au](#)