

TECHNICAL DATA SHEET

CODE:	HR3619, HR3619SS & HR2530
DESCRIPTION:	FIRE HOSE REELS STD & STAINLESS STEEL & WASHDOWN HOSE
CATEGORY:	FIREOUT FIRE HOSE REELS
REVISION DATE:	03 AUGUST 2020

FIREOUT FIRE HOSE REELS HR3619 & HR 3619SS ARE CERTIFIED & APPROVED TO AS 1221

**HR2530 30M X 25MM WASHDOWN HOSE IS MANUFACTURED IN ACCORDANCE WITH REQUIREMENTS OF AS 1221 HOWEVER DOES NOT CARRY CERTIFICATION*



PRODUCT DESCRIPTION:

The Fireout range of Fire Hose Reels utilize a proven design tried and tested in Australia for more than 30 years. A heavy duty, fast-fit hose reel ideal for all aggressive environments including industrial, mining, commercial and marine applications.

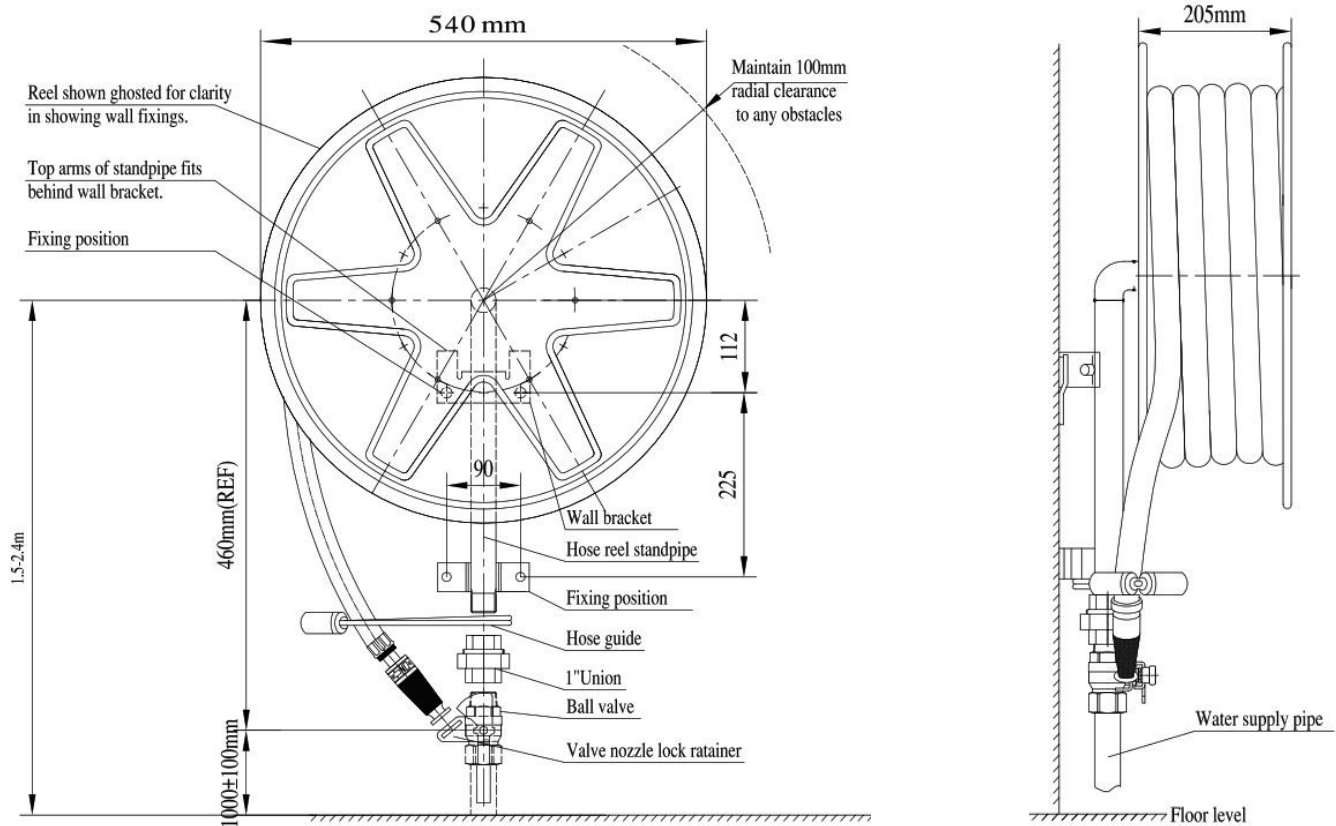
Combining quality components, simple operation and low maintenance design features, the Fireout Fire Hose Reel range includes the following three options:

- HR3619 HOSE REEL 36M (HOSE LENGTH) X 19MM (HOSE INTERNAL DIAMETER) QUICK FIT *MEETS AS 1221*
- HR3619SS HOSE REEL 36M X 19MM WITH STAINLESS STEEL DRUM *MEETS AS 1221*
- HR2530 HOSE REEL 30M X 25MM WASHDOWN *MANUFACTURED IN ACCORDANCE WITH MOST REQUIREMENTS AS 1221*

SPECIFICATIONS: Over page



T: 1300 88 3473
E: info@firesys.com.au
W: www.firesys.com.au

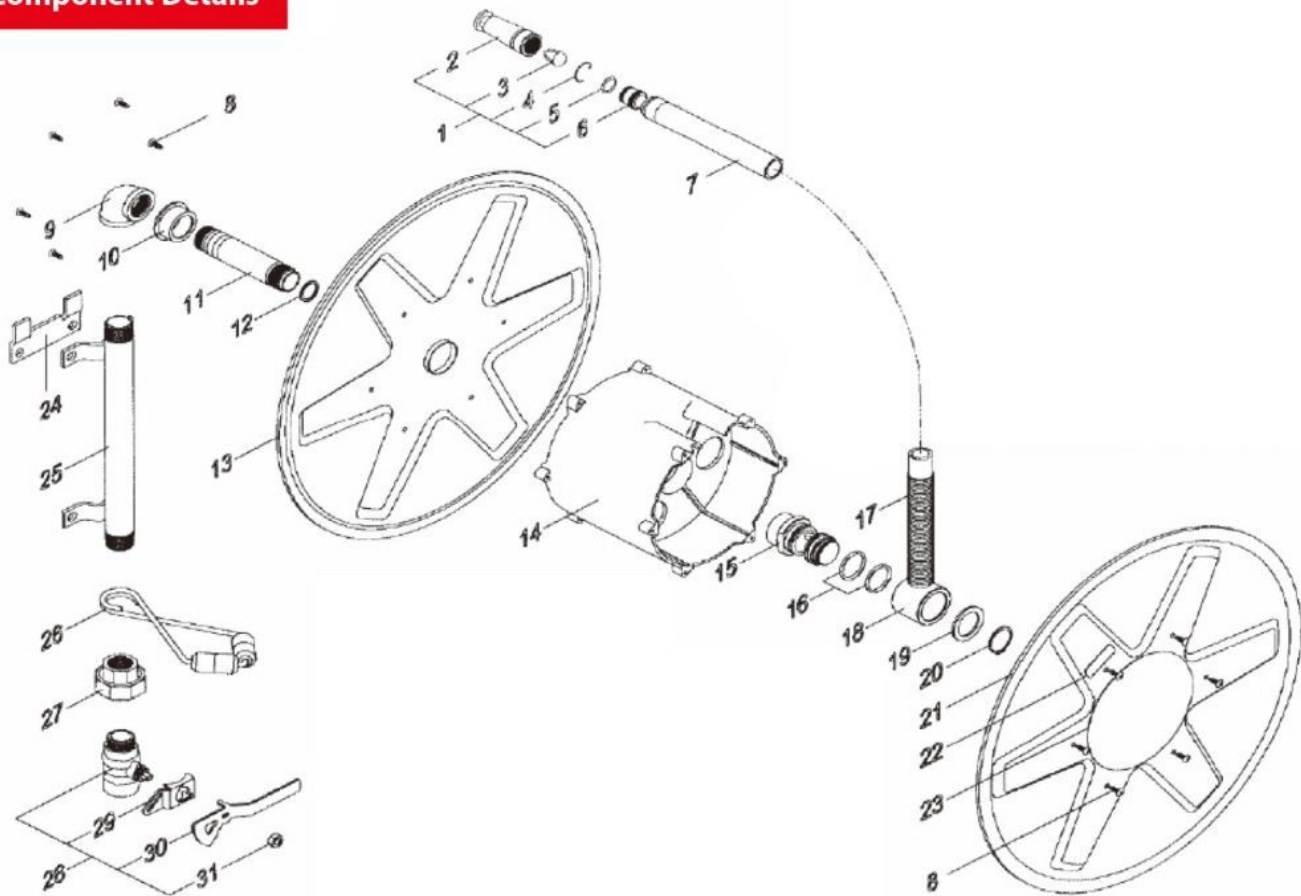


MODEL	HR3619	HR3619SS	HR2530
HOSE LENGTH	36M X 19MM ID	36M X 19MM ID	30M X 25MM ID
MINIMUM INLET PRESSURE	220 kPa	220 kPa	220 kPa
MAXIMUM WORKING PRESSURE	1.0 MPa	1.0 MPa	1.0 MPa
SIDE PLATES	SHEET STEEL PWD COATED RED	304 STAINLESS STEEL PWD COATED RED	SHEET STEEL PWD COATED RED
GLAND	ACETAL COPOLYMER	ACETAL COPOLYMER	ACETAL COPOLYMER
SPINDLE	MILD STEEL	304 STAINLESS STEEL	MILD STEEL
BEARING	ACETAL COPOLYMER	ACETAL COPOLYMER	ACETAL COPOLYMER
ELBOW	MALLEABLE IRON, GALVINISED	304 STAINLESS STEEL	MALLEABLE IRON, GALVINISED
SUPPORT ASSEMBLY	MILD STEEL, GALVINISED	304 STAINLESS STEEL	MILD STEEL, GALVINISED
HOSEGUIDE ASSEMBLY	MILD STEEL, ZINC PLATED	304 STAINLESS STEEL	MILD STEEL, ZINC PLATED
UNION	MALLEABLE IRON, GALVINISED	304 STAINLESS STEEL	MALLEABLE IRON, GALVINISED
BALL VALVE ASSEMBLY	BRASS / MILD STEEL HANDLES	BRASS / MILD STEEL HANDLE	BRASS / MILD STEEL HANDLES
NOZZLE ASSEMBLY	BRASS	BRASS	BRASS
DRUM	POLYPROPYLENE COPOLYMER	POLYPROPYLENE COPOLYMER	POLYPROPYLENE COPOLYMER
HOSE SPRING	GALVANISED STEEL SPRING	GALVANISED STEEL SPRING	GALVANISED STEEL SPRING
TAILPIECE	ACETAL COPOLYMER	ACETAL COPOLYMER	ACETAL COPOLYMER
CIRCLIP	STAINLESS STEEL	STAINLESS STEEL	STAINLESS STEEL
INLET PIVOT PIPE	GALVANISED MILD STEEL	GALVANISED MILD STEEL	GALVANISED MILD STEEL
WALL BRACKET	MILD STEEL	MILD STEEL	MILD STEEL



T: 1300 88 3473
 E: info@firesys.com.au
 W: www.firesys.com.au

Component Details



PART	DESCRIPTION
1	Nozzle Assembly
2	Nozzle Outer
3	Nozzle Insert
4	Wire Nozzle Clip
5	Nozzle O Ring
6	Nozzle Inner
7	Hose Assembly with Tailpiece
8	Screw
9	Elbow
10	Bearing
11	Spindle
12	Gland Seal Washer
13	Side Plate Inner
14	Drum
15	Gland Inner
16	Gland Seal Quad Rings

PART	DESCRIPTION
17	Hose Spring
18	Tailpiece
19	Retaining Washer
20	Circlip
21	Side Plate Outer
22	-
23	Main Label
24	Wall Bracket
25	Support Assembly
26	Hoseguide Assembly
27	Union
28	Ball Valve Assembly
29	Interlock Retainer
30	Interlock Handle
31	Interlock Nut